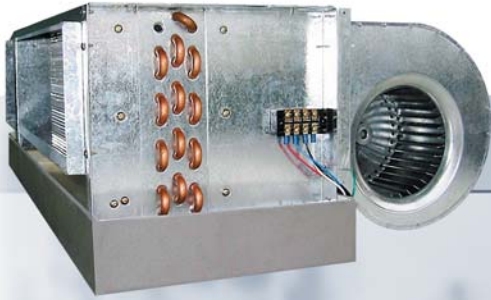




turn to the expertsSM 



42CH-B Series

Chilled Water Fan Coil Unit

Nominal: 400-2,000 CFM



42CH-B Series



Furred-in ceiling model 400 - 2000 cfm

The low silhouette styling of this unit makes it a popular choice for in-the-ceiling or over-the-closet applications in all types of buildings, particularly in apartments, hotels and motels.



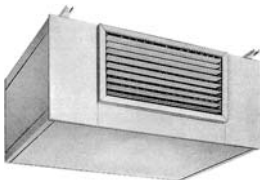
Furred-in ceiling model with plenum 400 - 2000 cfm

This adaptation of the basic ducted fan-coil unit includes a factory-installed plenum section that helps you cut field fabrication and labor costs. It's quiet too. The plenum section is fully lined with PE-FOAM insulation. Throwaway or cleanable filters are available.



Ceiling model with cabinet 400 - 2000 cfm

This enclosed edition of the basic 42CH unit features a cabinet fabricated from tough, 18-gage galvanized steel, with removable access panels that are lined with PE-FOAM insulation. Cabinet can be factory painted on special order.



Exposed-ceiling cabinet model with supply and return air grilles 400 - 2000 cfm

Similar to Model 42CH, this unit has a painted supply air grille and an anodized aluminum return air grille with a filter frame. The cabinet has a recoatable enamel finish. Interior is fully insulated with PE-FOAM. Motor is suitable for low static applications only.

42CH-B Series



(Optional)

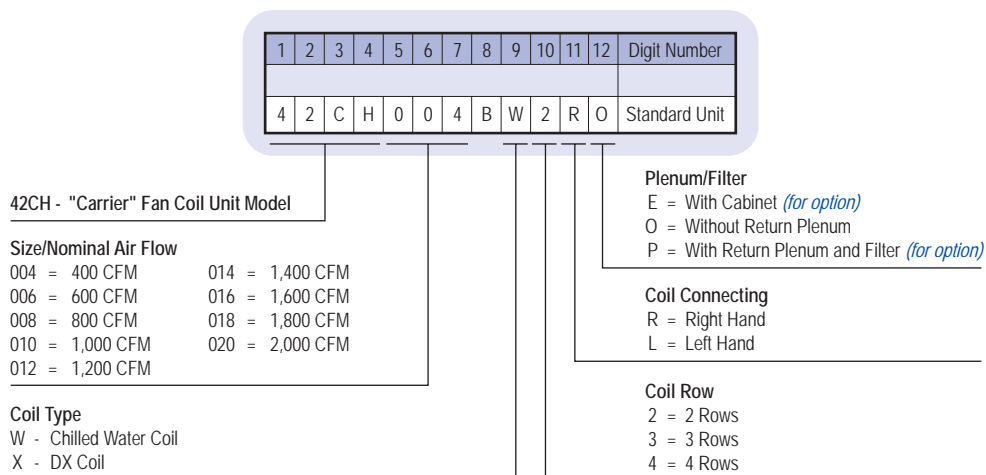
The Compact and Practical 42CH-B Fan Coil Units

The Carrier 42CH-B horizontal furred-in Fan Coils are quiet, compact and flexible. Nominal air quantity range from 400 cfm to 2000 cfm. These units are engineered for industrial and medium static pressure.

Features

- Ultra-compact design-saves installation space
- High efficiency heat transfer surface
- Super quiet operation
- Low installation and maintenance cost-easy wiring, piping connections
- Installed with direct driven forward curved centrifugal fan and 4-speed high efficient motor
- Minimum power requirement for significant money saving to the owners
- Insulated drain pan
- Factory leak test
- Requires no expensive ductwork
- Ideal for new construction or renovation

Model number nomenclature



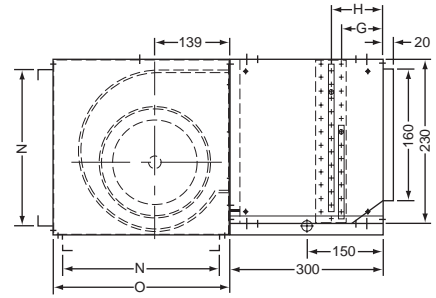
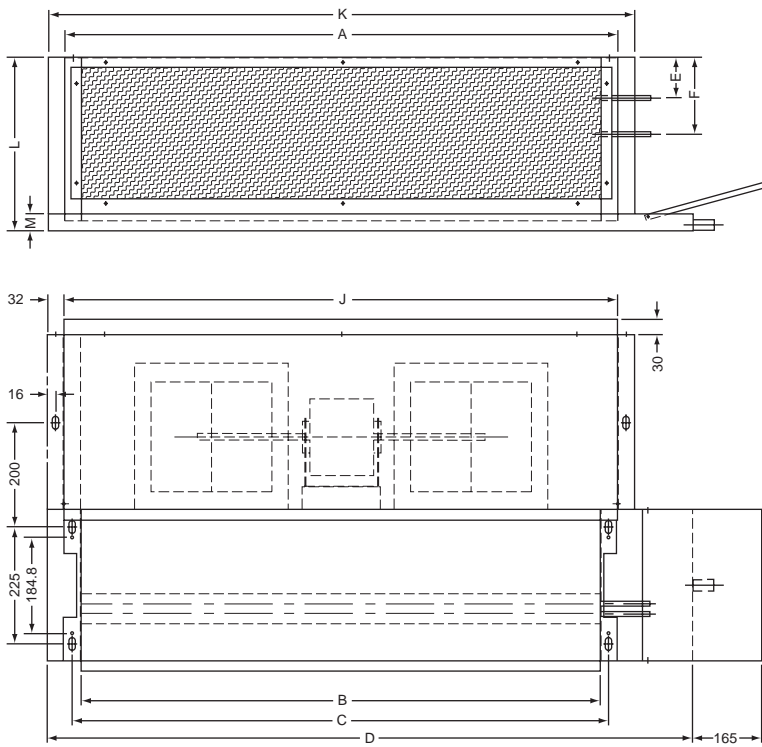
Physical data

Description			Fan Coil Unit								
			42CH-B								
Model			004	006	008	010	012	014	016	018	020
Capacity	Nominal Capacity	Btu/hr.	12,000	18,000	24,000	30,000	36,000	42,000	48,000	54,000	60,000
	Nominal Air Flow	CFM	400	600	800	1,000	1,200	1,400	1,600	1,800	2,000
Connections	Chilled Water	in.	5/8	5/8	5/8	5/8	5/8	3/4	3/4	3/4	3/4
	Drain (MPT)	in.	3/4	3/4	3/4	3/4	3/4	3/4	3/4	3/4	3/4
Fan Motor	Type		Permanent Split Capacity 4 Speed								
	Power Supply	V/Ph/Hz	220/1/50								
	Hp		1/12	1/12	1/6	1/6	1/4	1/2	1/2	3/4	3/4
	No. of Motor		1	1	1	1	1	1	1	1	1
Blower Wheel	Type		Centrifugal Forward Curve Blade								
	Diameter x Width	in. x in.	6 x 7	6 x 7	7 x 9	7 x 9	7 x 9	8 x 9	8 x 9	8 x 10	8 x 10
	No. of Blower		2	2	2	2	2	2	2	2	2

Note: - All data for standard product.

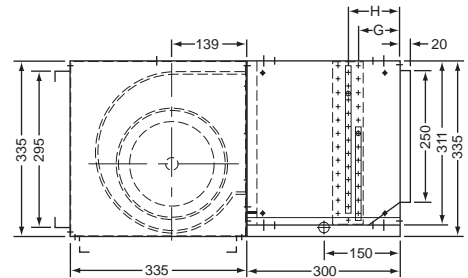
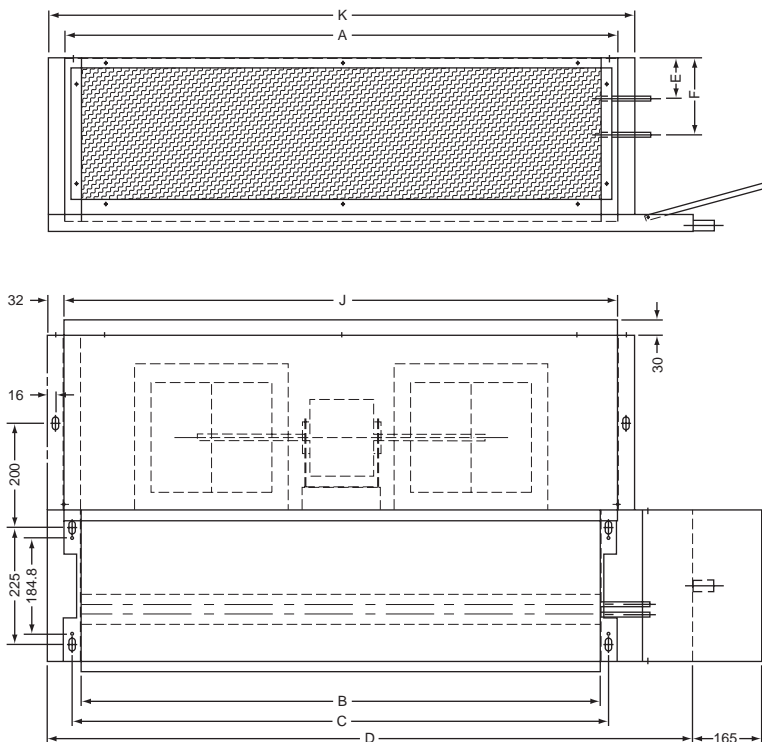
Unit dimensions

Model : 42CH004B-012B Furred-in ceiling model with plenum 400-1200 cfm



Dimension	004	006	008	010	012
A	775	775	775	902	1055
B	711	711	711	838	991
C	743	743	743	870	1023
D	951	951	951	1078	1231
E	63	63	63	63	63
F	138	138	138	138	138
G	80	80	80	80	80
H	99	99	99	99	99
J	775	775	775	838	991
K	839	839	839	902	1054
L	285	285	290	290	290
M	30	30	65	65	65
N	225	225	250	250	250
O	265	265	290	290	290
Weight (kg)	34	39	42	54.5	67

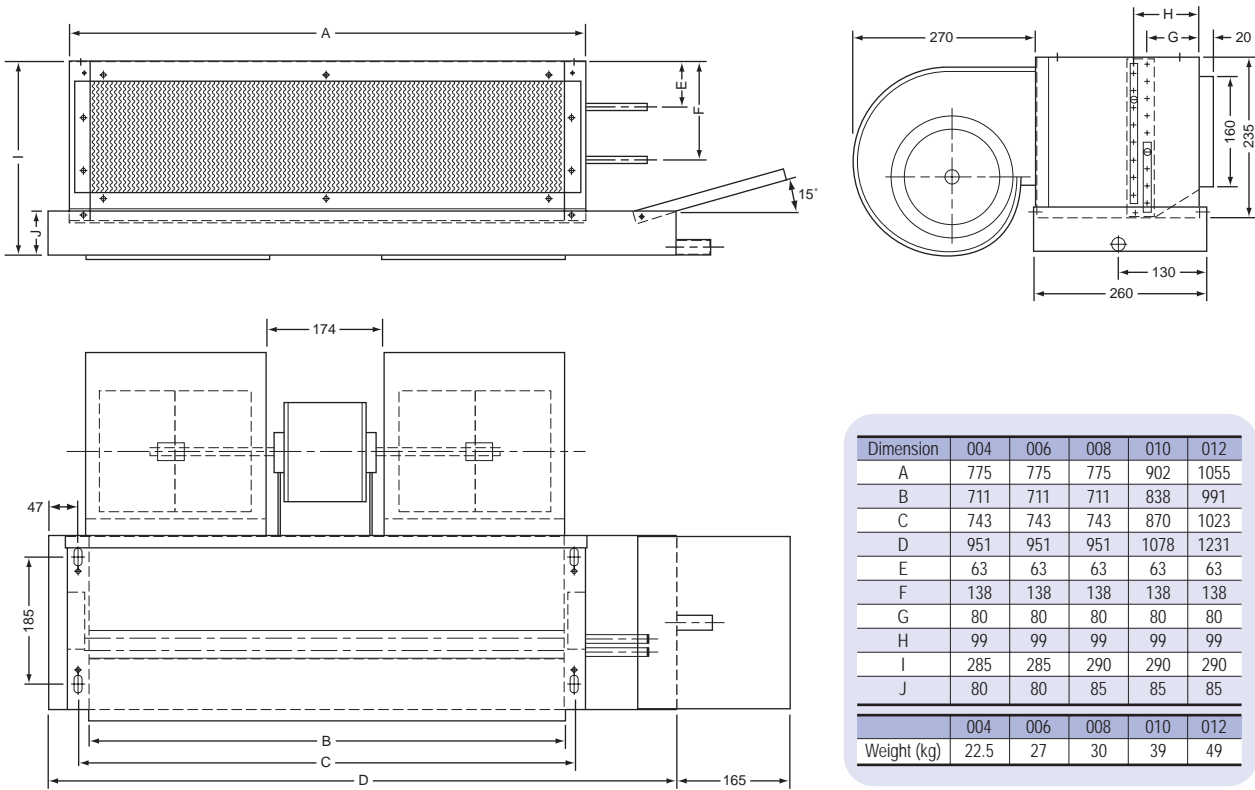
Model : 42CH014B-020B Furred-in ceiling model with plenum 1400-2000 cfm



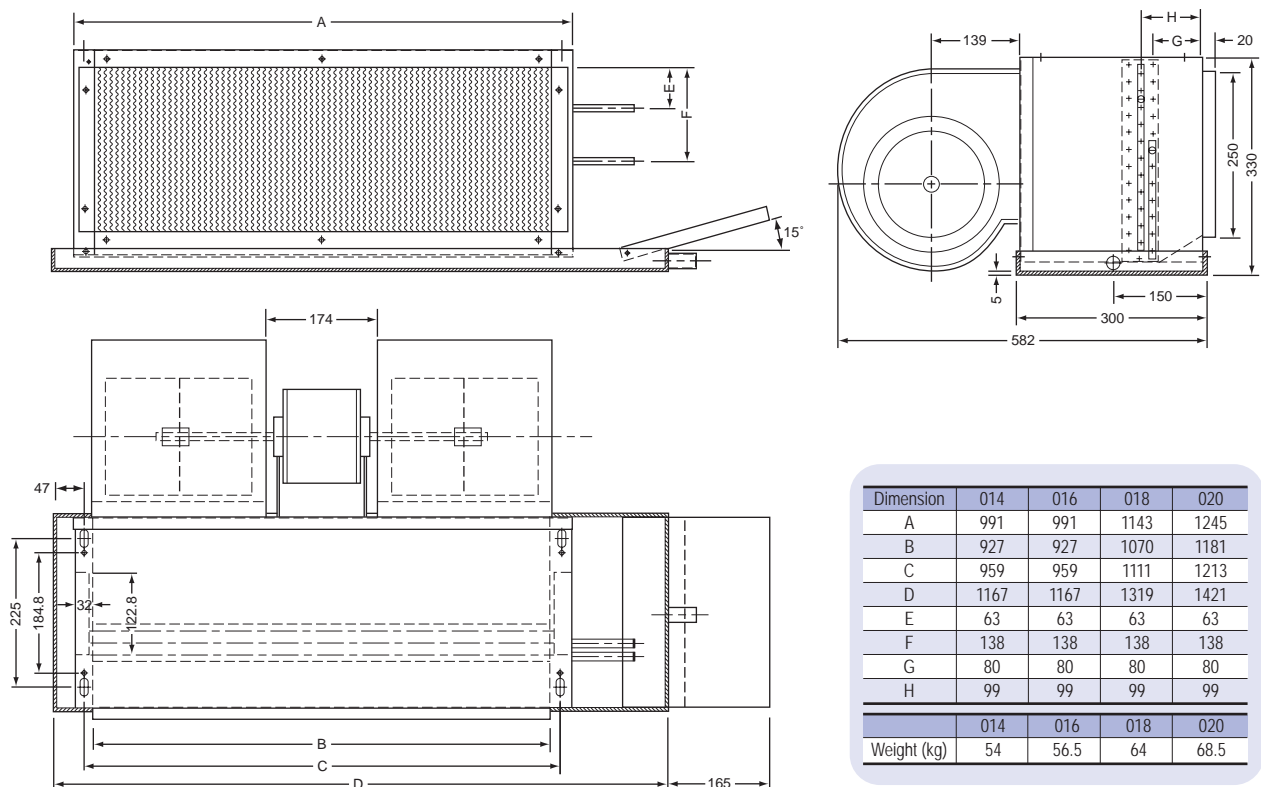
Dimension	014	016	018	020
A	1055	1055	1207	1309
B	991	991	1143	1245
C	1023	1023	1175	1277
D	1231	1231	1383	1485
E	63	63	63	63
F	138	138	138	138
G	80	80	80	80
H	99	99	99	99
J	1055	1055	1208	1310
K	1119	1119	1272	1374
Weight (kg)	73	77	86.5	95.5

Unit dimensions

Model : 42CH004B-012B Furred-in ceiling model 400-1200 cfm



Model : 42CH014B-020B Furred-in ceiling model 1400-2000 cfm



Metric conversion chart

Metric Tech	x	=	English Unit	x	=	SI Unit
Area						
cm ²				100		mm ²
cm ²	0.1550		in. ²	645.2		mm ²
m ²				1.0		m ²
m ²	10.76		ft ²	0.09290		m ²
Length						
μm				1.0		μm
μm	39.37		micro-inch	0.0254		μm
mm				1.0		mm
mm	0.03937		in.	25.4		mm
mm	0.003281		ft	304.8		mm
m				1.0		m
m	3.281		ft	0.3048		m
m	1.094		yd	0.9144		m
Mass						
g				1.0		g
g	0.03527		oz	28.35		g
kg				1.0		kg
kg	2.205		lb	0.4536		kg
tonne, Mg				1.0		tonne, Mg
tonne, Mg	1.102		U.S. ton (2000 lb)	0.9072		tonne, Mg
Power						
kcal/h				1.163		W
kcal/h	3.968		Btu/h	0.2931		W
Hp metric				0.7355		kW
Hp metric	0.9863		HP (550 $\frac{ft \cdot lb}{S}$)	0.7457		kW
Mcal/h				1.163		kW
Mcal/h	0.3307		Ton refr.	3.517		kW
Pressure						
mm w.g. 4°C				9.806		Pa
mm w.g. 4°C	0.03937		in H ₂ O 39.2°F	249.1		Pa
mm Hg 0°C				0.1333		kPa
mm Hg 0°C	0.03937		in Hg 32°F	3.386		kPa
kgf/cm ²				98.07		kPa
kgf/cm ²	14.22		psi	6.895		kPa
mH ₂ O	3.281		ft H ₂ O	2.989		kPa

Prefixes

M	MEGA	- 10 ⁶
k	KILO	- 10 ³
d	DECI	- 10 ⁻¹
c	CENTI	- 10 ⁻²
m	MILLI	- 10 ⁻³
μ	MICRO	- 10 ⁻⁶

Legend

m	METER	K	KELVIN
cal	CALORIE	W	WATT
kg	KILOGRAM (mass)	Pa	PASCAL
kgf	KILOGRAM - FORCE	J	JOULE
L	LITER	N	NEWTON
°C	DEGRESS CELSIUS	h	HOUR

Metric Tech	x	=	English Unit	x	=	SI Unit
Temperature Interval						
°C				1.0		K
°C	1.8		°F	0.5556		°C
Velocity						
m/s				1.0		m/s
m/s	3.281		ft/s	0.3048		m/s
m/s	196.9		ft/min	0.00508		m/s
Volume						
mm ³				1.0 x 10 ⁻⁶		L
mm ³	6.102 x 10 ⁻⁵		in. ³	0.01639		L
L				1.0		L
L	0.03531		ft ³	28.32		L
m ³				1.0		m ³
m ³	1.308		yd ³	0.7646		m ³
L	0.2642		U.S. gal	3.785		L
L	2.113		U.S. pint	0.4732		L
mL, cm ³				1.0		mL
mL, cm ³	0.03381		U.S. oz	29.57		mL
Volume/Time						
m ³ /h				0.2778		L/s
m ³ /h	0.5886		ft ³ /min	0.4719		L/s
m ³ /h	4.403		U.S. gal/min	0.06309		L/s
L/h				2.778 x 10 ⁻⁴		L/s
L/h	4.403 x 10 ⁻³		U.S. gal/min	0.06309		L/s
(m ³ /h)/ (1000 kcal/h)	1.780		cfm/ton	0.1342		L/s kw

Metric Tech	Conversion Factor	=	English Unit	Conversion Factor	=	SI Unit
Temperature						
°C				°C + 273.15		K
°C	(°C x 1.8) + 32		°F	(°F - 32) ÷ 1.8		°C

Units

cP	CENTIPOISE	mm Hg	MILLIMETERS MERCURY
cSt	CENTISTOKE	tonne	= 1000 kg
HP metric = (PS, CV, ch)	METRIC HORSEPOWER	kcal	= fg FRIGORIE
mm w.g.	MILLIMETERS WATER GAUGE	bar	= 100 kPa

บริษัท แครีเออร์ (ประเทศไทย) จำกัด
 ชั้น 14-15 อาคารเนชั่น ทาวเวอร์
 46/63-74 ถ.บางนา-ตราด กม. 4.5
 บางนา กรุงเทพฯ 10260
 โทร. 0-2751-4777 แฟกซ์: 0-2751-4778

Carrier (Thailand) Ltd.
 14-15th Fl., Nation Tower,
 46/63-74 Bangna-Trad Road Km. 4.5, Bangna,
 Bangkok 10260 Thailand
 Tel.: 0-2751-4777 Fax: 0-2751-4778



YOUR CARRIER MAN :