



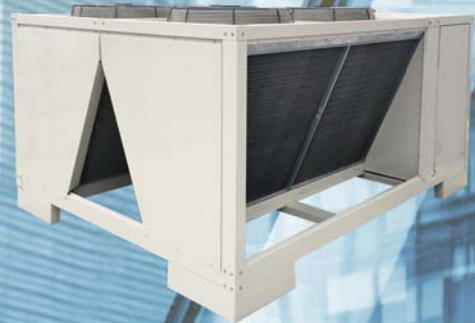
38ASU Series

Air Cooled Condensing Unit

156,000–600,000 BTUH



150S301–300S301



400S301–600S301



38ASU Series

Features & Benefits

- Environment friendly with R-410A refrigerant for all range comply.
- Fully Hermetic Scroll Compressor with high efficiency and reliability.
- Dual Compressor & Dual Circuit
- Direct driven condenser fan
- High & Low pressure switches
- Small footprint
- Shut off service valves
- Core senses for compressor (for 38ASU400-500)
- Module Protection for compressor (for 38ASU600)

Optional

- Single circuit with Tandem Compressor
- Control module Protection (for 38ASU150-300)
- Copper fin / Blue fin
- Phase Protector

Physical data

| Description | | Air Cooled Condensing Unit | | | | | | | |
|---------------------------------|---------------------------|------------------------------|----------------------------------------------------------|------------------------|------------------------|------------------------|------------------------|------------------------|------------------------|
| Product Model | 38ASU | 150S301 | 200S301 | 240S301 | 300S301 | 400S301 | 500S301 | 600S301 | |
| Power Supply | V/Ph/Hz | 380V/3Phase / 50Hz. (4wires) | | | | | | | |
| Nominal Cooling Capacity | W | 45,700 | 58,600 | 70,300 | 87,900 | 117,200 | 146,500 | 175,800 | |
| | Btu/hr. | 156,000 | 200,000 | 240,000 | 300,000 | 400,000 | 500,000 | 600,000 | |
| Power Consumption | W | 13,380 | 17,630 | 22,260 | 26,760 | 33,270 | 42,520 | 56,320 | |
| Operating Current | Amp. | 25.50 | 33.30 | 42.30 | 55.00 | 59.80 | 79.10 | 100.50 | |
| Compressor | Power Supply | 380/3/50 | | | | | | | |
| | Compressor Type | Scroll | | | | | | | |
| | LRA (Each) | Amp. | 101.0 | 118.0 | 153.0 | 174.0 | 219.0 | 287.5 | 310.0 |
| | QTY | | 2 | 2 | 2 | 2 | 2 | 2 | 2 |
| Fan Motor | Power Supply | 380/3/50 | | | | | | | |
| | Power Input (Each) | W | 366 | 366 | 630 | 630 | 366 | 630 | 630 |
| | RLA (Each) | Amp. | 1.00 | 1.00 | 2.21 | 2.21 | 1.00 | 2.21 | 2.21 |
| | Fan Type | Propeller | | | | | | | |
| | QTY | | 2 | 2 | 2 | 2 | 4 | 4 | 4 |
| | P-Fan Diameter | inch | 24 | 24 | 28 | 28 | 24 | 28 | 28 |
| Drive Type | Direct | | | | | | | | |
| Safety Device | Hi-Pressure Switch | psig | 600 ±25 / 420 ±15 (Cut out / Cut in) - Auto Restart type | | | | | | |
| | Low-Pressure Switch | psig | 65 ±5 / 115 ±5 (Cut out / Cut in) - Auto Restart type | | | | | | |
| Refrigerant | Type | R-410A | | | | | | | |
| | Pre-Charging from Factory | kg. | 1.00 x 2 | 1.00 x 2 | 1.50 x 2 | 2.00 x 2 | 2.00 x 2 | 2.00 x 2 | 2.00 x 2 |
| Piping Connections (2 Circuits) | Liquid | Q'ty.....inch | 2.....1/2 (Flare) | 2.....1/2 (Flare) | 2.....1/2 (Flare) | 2.....5/8 (Flare) | 2.....7/8 (Flare) | 2.....7/8 (Flare) | 2.....7/8 (Flare) |
| | Suction | Q'ty.....inch | 2.....7/8 (Flare) | 2.....1-1/8 (Brazeing) | 2.....1-1/8 (Brazeing) | 2.....1-1/8 (Brazeing) | 2.....1-5/8 (Brazeing) | 2.....1-5/8 (Brazeing) | 2.....2-1/8 (Brazeing) |
| Dimension | Height | mm. | 970 | 970 | 1,122 | 1,122 | 1,300 | 1,580 | 1,580 |
| | Width | mm. | 1,940 | 1,940 | 1,940 | 1,940 | 2,050 | 2,135 | 2,135 |
| | Depth | mm. | 1,040 | 1,040 | 1,040 | 1,040 | 2,795 | 3,020 | 3,020 |
| Weight | kg. | 390 | 450 | 480 | 510 | 960 | 1,100 | 1,200 | |

*RATING CONDITION: OUTDOOR AMBIENT TEMPERATURE 95°

Electrical Data

| Unit Model | Power Supply | Voltage Range | | Compressor | | | Fan Motor | | Recommended | | |
|--------------|---------------|---------------|-----|------------|------------|-------|-----------|------------|-------------------|--------------------|---------------|
| | | Min | Max | Q'TY | RLA / Each | LRA | Q'TY | RLA / Each | Power Wire (mm.2) | Ground Wire (mm.2) | Field CB (AT) |
| 38ASU150S301 | 380V/3Ph/50Hz | 342 | 415 | 2 | 12.4 | 101 | 2 | 1.00 | 10 | 4 | 40 |
| 38ASU200S301 | 380V/3Ph/50Hz | 342 | 415 | 2 | 16.6 | 118 | 2 | 1.00 | 16 | 6 | 50 |
| 38ASU240S301 | 380V/3Ph/50Hz | 342 | 415 | 2 | 19.8 | 153 | 2 | 2.21 | 25 | 6 | 60 |
| 38ASU300S301 | 380V/3Ph/50Hz | 342 | 415 | 2 | 26.3 | 174 | 2 | 2.21 | 35 | 10 | 80 |
| 38ASU400S301 | 380V/3Ph/50Hz | 342 | 415 | 2 | 29.2 | 219.0 | 4 | 1.00 | 35 | 10 | 100 |
| 38ASU500S301 | 380V/3Ph/50Hz | 342 | 415 | 2 | 36.8 | 287.5 | 4 | 2.21 | 50 | 16 | 125 |
| 38ASU600S301 | 380V/3Ph/50Hz | 342 | 415 | 2 | 48.1 | 310.0 | 4 | 2.21 | 95 | 16 | 150 |

Remark : RLA : Rated Load Amps. LRA : Locked Rotor Amps. Cable type : THW
 Type of conductor is installed : Insulated single core cables up to 3 lines. Or
 Insulated sheathed cables up to 3 axes in a pipe in the air in a pipe buried in the wall plaster. or in a pipe in the ceiling



150S301-300S301



400S301-600S301

บริษัท แคนเนียร์ (ประเทศไทย) จำกัด

1858/63-74 ชั้น 14,15
 ถ.บางนา-ตราด กม. 4.5 บางนา
 กรุงเทพฯ 10260
 โทร. 0-2090-9999 แฟกซ์: 0-2751-4778

Carrier (Thailand) Ltd.

1858/63-74, 14th, 15th Floor,
 Bangna-Trad Road, Km. 4.5, Bangna,
 Bangkok 10260 Thailand
 Tel. 0-2090-9999 Fax: 0-2751-4778

บริษัทฯ ขอสงวนสิทธิ์ที่จะเปลี่ยนแปลงรายละเอียดข้างต้น โดยไม่ต้องแจ้งให้ทราบล่วงหน้า
 Carrier reserves the right to make changes in specifications without prior notice.



YOUR CARRIER MAN :